



# ASSEMBLY INSTRUCTIONS

JD 9400, 9410, 9450, 9500, 9510, 9550,  
9600, 9610, 9650, & CTS MODELS  
(STANDARD)  
BIG TOP 24545, 24546



## WARNING



1. Use of this product is at the owner's discretion. Increasing grain capacity may adversely affect center of gravity, stability, and controllability. Exceeding maximum combine weight limits can risk structural integrity and drive line components. Crary Industries does not assume any liabilities, or make any warranties regarding the performance or structure of the combine. See combine owner's/operator's manual for specific limitations, operating recommendations, and safety information.
2. Shut off combine and remove key before installing the hopper extension. Make sure the combine is on a level surface. Engage parking brake.
3. Be careful when working in the combine hopper. The sloped sides and sharp edges are dangerous and could cause serious injury.

Crary Industries recommends assembling and installing the Big Top Hopper Extension directly on the combine hopper. It is possible to assemble the hopper extension on the ground and raise it to the combine hopper with an overhead hoist. However, fitting problems caused by flexing or bending of the hopper extension parts might occur.

If your combine has an existing flip-up grain tank extension, remove it (or fold it in) before installing the Big Top.



## IMPORTANT



Check the markings on the panels before installation. Ensure the panels are installed correctly.

- LF/RR = Left Front or Right Rear
- RF/LR = Right Front or Left Rear



Manufactured in the  
United States of America  
by Crary Industries

**CRARY**  
Crary Industries  
237 12th St. NW • P.O. Box 849  
West Fargo, ND 58078-0849  
(701)282-5520 • FAX: (701)282-9522  
[www.crary.com](http://www.crary.com)

## INSTALL FOAM AROUND BASE

1. Remove existing 8mm x 3/4" bolts and nuts from JD combine grain tank (See Figure 1).

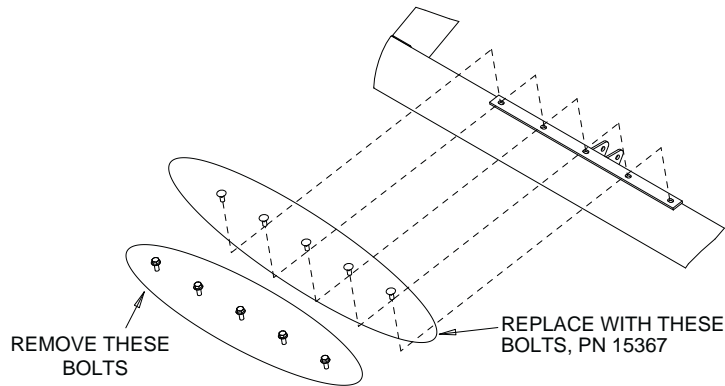


Figure 1

2. Replace bolts with the 5/16" x 3/4" carriage bolts (PN 15367) and nuts (PN 16356). Tighten to proper torque.
3. Install foam around the base of the Big Top as shown in Figure 2. The foam is intended to seal the gaps between the Big Top frame and the combine hopper. No foam is required on top of the connector strap. NOTE: When installed correctly, only about 3/4" of the frame (on the left and right sides) will be resting on top of the OEM grain tank.

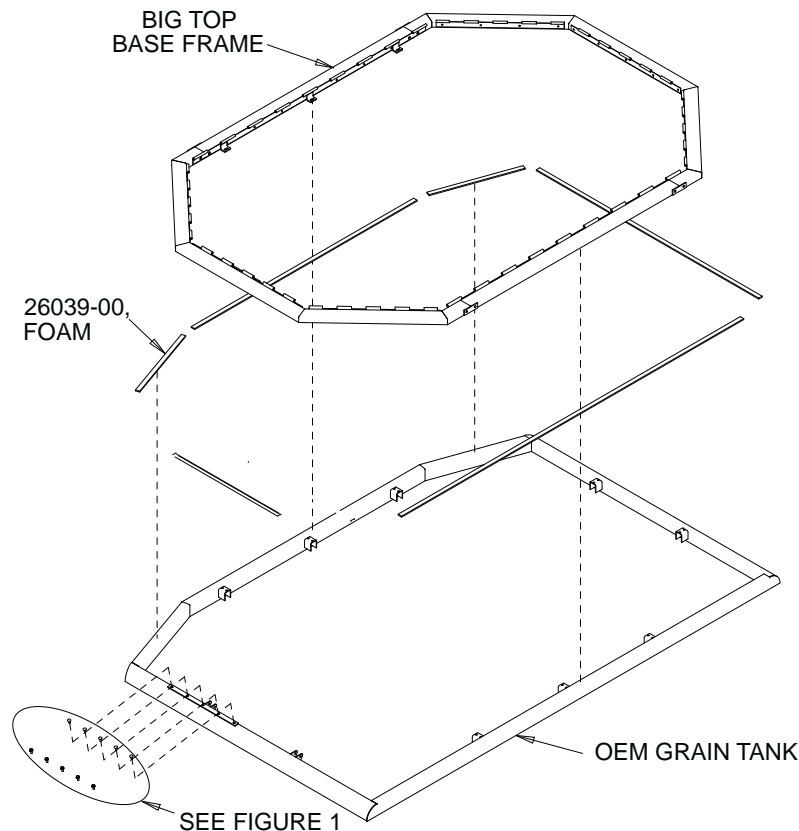


Figure 2

## MOUNT THE BASE

1. Slide the four base sections together as shown (See Figure 2). Bolt the sections together with 3/8" x 4" bolts and nuts. The base sections will only fit together one way.
2. Secure the base sections to the combine hopper with the four hold-down brackets as shown.

## ATTACH THE PANELS

### NOTE

Attach the front/rear and side panels first; attach the corners last.

1. Align the front panel hinge with the front base connector hinge. Insert a 26.25" hinge pin through a hinge opening as shown (See Figure 3). Insert a 32.5" (9400/9500 models) or 43" (9600 models) hinge through the opposite opening. Repeat for rear panel.
2. Align the left panel hinge with the left base hinge. Insert a 32.50" hinge pin through the hinge opening as shown (See Figure 3). Repeat for right panel.
3. Attach the corner panels with windows to the right and left front corner base hinges with 26.25" hinge pins.
4. Attach the corner panels with the windows to the right and left rear corner base hinges with 26.25" hinge pins.
5. Punch out the lynch pin strap holes located approximately 3" from the bend in the panels. Bolt two lynch pin straps per hole with 1/4" x 3/4" bolts. Secure with 1/4" lock nuts.

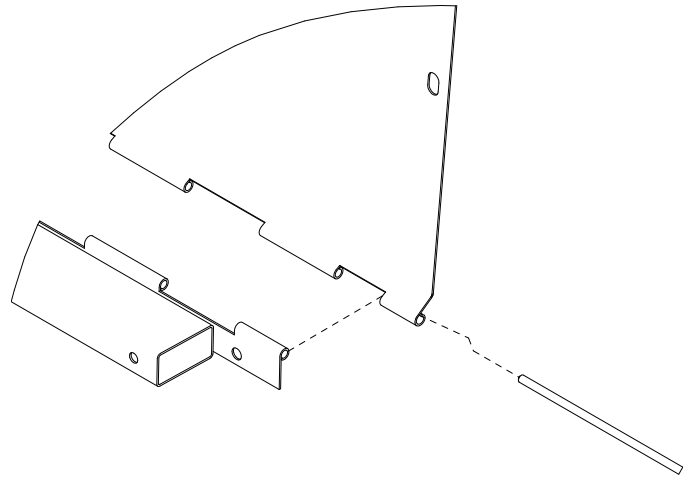


Figure 3 - Hinge Assembly

## RELOCATE THE LIGHT AND GRAIN SENSOR

1. Remove the hopper light from its bracket. If required, connect the light extension cable between the existing light connection.
2. Remove the grain sensor from its bracket. If required, connect the sensor extension cable between the existing sensor connection.
3. Attach the hopper light and grain sensor to the bracket with bolts previously removed. Mount the bracket to the front panel as shown with 1/4" x 1/2" bolts and nuts.

### NOTE

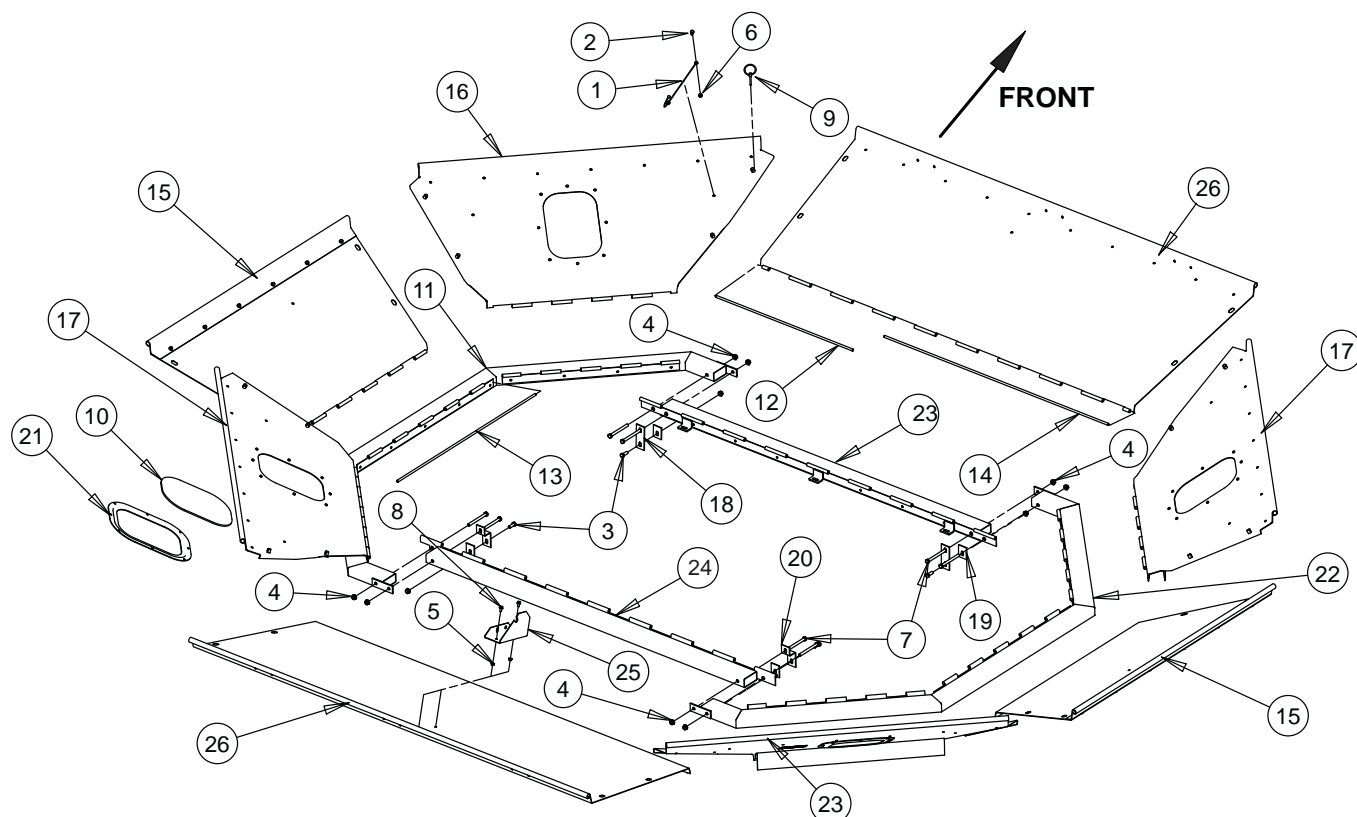
Two sensor/light brackets are included in your owner's kit. If your combine has two grain sensors, you can mount one sensor and bracket on each side panel (side panel bracket holes are predrilled)

When properly mounted, the holes in the side panels should fit easily over the pegs in the corner panels. Secure the panels by inserting lynch pins into the holes in the corner panels.

## FOLD THE PANELS

1. Fold the side panels towards the middle of the combine hopper.
2. Fold the front and rear panels inward.
3. Fold the four corners.

# PARTS DIAGRAM



**24545 AND 24546, JD STANDARD, BIG TOP**

ITEM	PART NUMBER	DESCRIPTION	QTY
1	12530	LANYARD, NYLON	16
2	15001	BOLT, 1/4" X 3/4" HHCS GR5 ZP	8
3	15006	BOLT, 3/8" X 1" HHCS GR5 ZP	4
4	15051	NUT, 3/8" SERRATED FLANGE NC ZP	12
5	15053	NUT, 1/4" SERRATED FLANGE NC ZP	4
6	15087	NUT, 1/4" CENTERLOCK NC ZP	8
7	15272	BOLT, 3/8" X 4" HHCS NC GR5 ZP	8
8	15344	BOLT, 1/4" X 1/2" SERRATED FLANGE GR5 ZP	4
9	16493	PIN, 3/16" LYNCH	16
10	23307	WINDOW	4
11	23735	FRAME, LEFT ASSEMBLY (JD 9000)	1
12	23784	PIN HINGE, 26.25"	6
13	23785	PIN HINGE, 32.50" (JD 9400/9500)	4
13	23785	PIN HINGE, 32.50" (JD 9600)	2
14	23786	PIN HINGE, 43.00"	2
15	24536	SIDE PANEL, ASSEMBLY	2
16	24957	FRONT CORNER, LH ASSY.	2
17	24958	FRONT CORNER, RH ASSY.	2
18	23286-15	BRACKET, HOLD DOWN, FRONT	2
19	23287-15	CLIP, HOLD DOWN	4

**24545 AND 24546, JD STANDARD, BIG TOP**

ITEM	PART NUMBER	DESCRIPTION	QTY
20	23336-15	BRACKET, HOLD DOWN, BACK	2
21	23489-12	FRAME WINDOW	4
22	23734-15	FRAME, RIGHT ASSEMBLY	1
23	23757-15	CONNECTOR TUBE, FRONT WELDMENT(JD 9600)	1
24	23758-15	CONNECTOR TUBE, REAR WELDMENT(JD 9600)	1
24	23731-15	CONNECTOR FRAME, FRONT AND REAR (JD 9400/9500)	2
25	23764-15	SENSOR/LIGHT BRACKET	2
26	24512-15	PANEL, FRONT AND REAR (JD 9600)	2
26	24513-15	PANEL, FRONT AND REAR (JD 9400/9500)	2
<b>PARTS NOT SHOWN ON DIAGRAM</b>			
-	16763	HARNESS, SENSOR EXTENSION	1
-	16771	HARNESS, LIGHT EXTENSION	1
-	12478	HARNESS, LIGHT EXTENSION	1
-	15436	BOLT, 5/16" X 1-1/4" HHCS NC GR5 ZP	6
-	15250	WASHER, 5/16" FLAT ZP	6
-	15356	NUT, 5/16" NE NYLOCK ZP	6
-	14946-00	HARNESS, LIGHT EXTENSION	1
-	17320	STRAP 11" NYLON TIE	6